



Compact Fluorescent

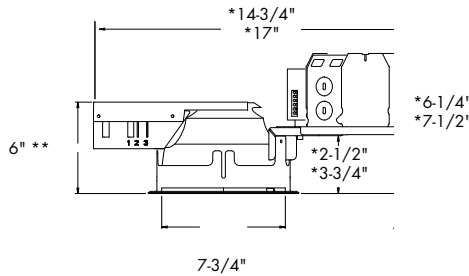
**8" Pro-Optic™ Retrofit Housing Recessed**  
**32/42 W Triple Tube**  
**2 Horizontal Lamps**  
**Non-IC**

Type

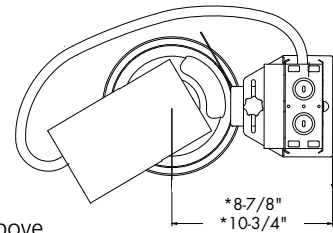
-DVEB  
P182H

Catalog No.	Lamping	Voltage
P182H-DVEB*	(2) 32w or 42w Triple Tube	120/277V

\*MTO only

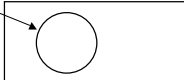


\*\*7-1/8" depth for Lensed and Wall Wash  
Ceiling Opening = See Guide  
Maximum Ceiling Thickness = 1-1/2"



HOUSING COMPATIBILITY GUIDE		
ORDERING GUIDELINES	8 INCH OPENING RANGE	
	MIN	MAX
REQUIRES SD HOUSING OPTION	7-15/16	8-1/8
ALL STANDARD HOUSINGS	8-1/8	8-3/4
REQUIRES P8101-01 KIT ACCESSORY & WF REFLECTOR OPTION	8-3/4	9-1/8

Dimensions shown are for the diameter of the frame flange at it's narrowest point



\*Dimensions shown are for range of adjustability

- Trim must be ordered separately; P8115 trim shown above

**APPLICATIONS:**

The P182H series offers horizontally lamped compact fluorescent downlight fixtures designed specifically to retrofit into ceilings with existing recessed downlight fixtures without the need to remove the existing fixture. This luminaire is ideal for a wide variety of medium to high ceiling applications including commercial, retail, hospitality, and design-build

**Specifications:**

Electrical

- Universal heavy gauge junction box with snap-out sides
- Grounding pigtail
- 1/2" & 3/4" pryouts for rigid or BX fittings
- P183H-EB includes 120v/277v electronic HPF ballast
- Thermally active insulation detector
- Rated for 8 #12 90 degree conductors (4 in, 4 out)
- Thermal and self resetting end of life ballast protection

Construction

- 2 horizontal 32W or 42W GX24q-4 quad tube compact fluorescent
- Die cast aluminum plaster frame collar
- Precision formed galvanneal sheetmetal components
- Trims adjust to accommodate 1/2" to 1-1/2" thick ceilings

Labeling

- cCSAus listed for damp location and through branch wiring
- Non-IC rated

Lamp/Trim

- Socket box mounts securely to reflector for consistent lamp positioning and photometric performance
- Trim retention accomplished by use of 3 spring clips located inside aperture of frame in
- Order trim separately

Options

- Small diameter housing option (refer to guide) add 'SD' to end of SKU number.

Technical Data

Lamp	Ballast	Lamp Base	Line Current Amps	Input Watts	Min. Start Temp.(F)
32w	120v	GX24q4	.57	68	0
32w	277v	GX24q4	.25	68	0
42w	120v	GX24q4	.78	93	0
42w	277v	GX24q4	.33	93	0
26w	120v	GX24q4	.46	55	0
26w	277v	GX24q4	.21	55	0

**Open**

P8115-21A Clear Alzak  
P8115-22A Gold Alzak

**Baffle**

P8114-28 Ptd. White  
P8114-31 Ptd. Black

**Lensed Wet Location**

P8116-68 White Prismatic  
P8116-83 White Fresnel

**Wall Wash**

P8113-21A Clear Alzak

Progress Lighting  
701 Millennium Blvd.  
Greenville, South Carolina 29607

www.progresslighting.com

Note: Wide flange trims available for P8115 series. Refer to housing-compatibility guide. Add 'WF' to end of SKU number.