

Job Name:		Item Number:	
Specifier Name:		Sales Agency:	
Specifier Contact:		Agency Contact:	
Fixture Type:		Comments:	
Quantity:		Approval:	

6w 12V MR16 GU5.3 LED 3000K FL 40°

Description

This LED lamp is recommended for use with Ambiance Lx MRC11 / MR16 lampholders. The directional nature of the MR16 LED lamp is effective at highlighting areas of interest along your linear lighting system. Adjustable lampholders (sold separately) offer added precision. Choose from 2700, 3000 and 4000K LED lamps in 12V. Dimmable on magnetic and electronic low-voltage dimmers. Match your dimmer to your transformer.

Specifications

Item Number	97305S
Dimensions	D: 1 31/32" L: 1 15/16"
Min. Spacing	6" on center
Voltage	12V
Lamp Type	MR16
Lamp Base	GU5.3 Bi-Pin
Light Source	LED
Color Temperature	3000°K
Lumens	260
Watts Consumed	6 watts
Efficacy	43.3 lm/w
Color Rendering	>85 CRI
Rated Average Life	35,000 hours to 70%
Beam Spread	FL - Flood 40 °
Safety Listing	cETL Listed for Dry Locations
Warranty	5-Year Limited Warranty

Available Photometry

- LM79 Photometry
- LED Lamp and Dimming Guide

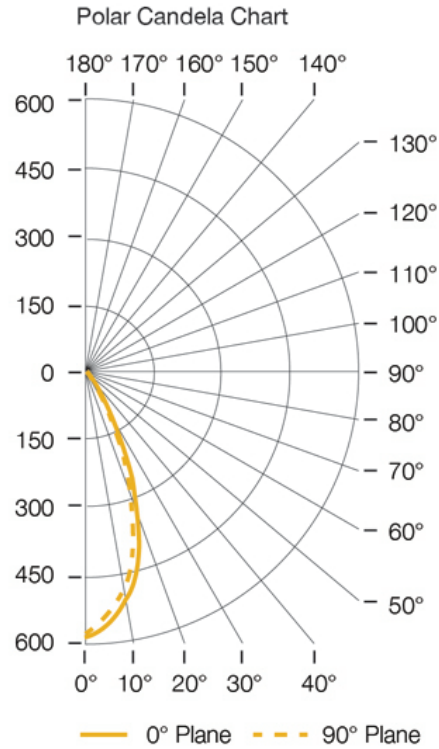
Shipping Information:

Package Type	Product #	Quantity	UPC	Length	Width	Height	Cube	Weight	UPS Ship
Individual	97305S	1	785652152047	2.5	2.5	3.75	0.014	0.2	Yes
Master Pack	97305S	6	10785652152044	8	5.5	4.5	0.115	1.1	Yes
Shipping Master		24							

Photometric Diagram:

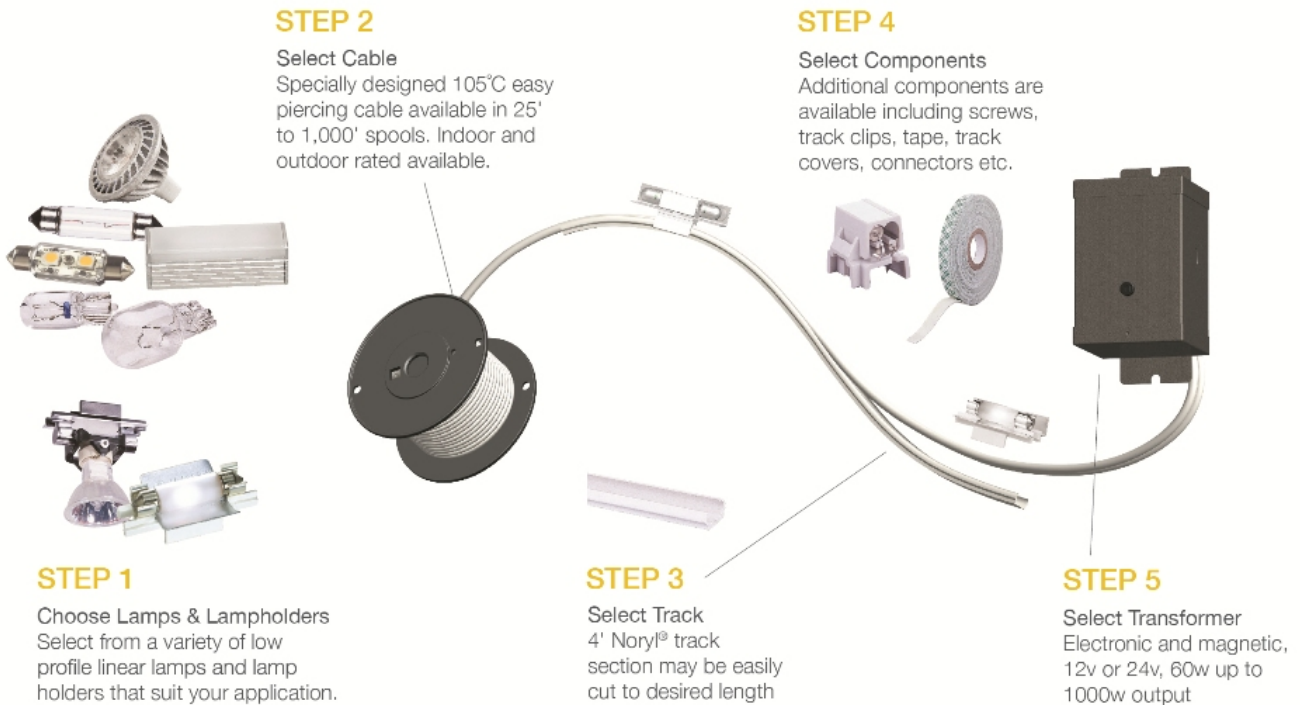
Zone (Degrees)	Lumens	% of Lamp
0° – 60°	247.2	96.3%
60° – 90°	9.5	3.7%
0° – 90°	256.7	100%
90° – 180°	0.0	0.0%
0° – 180°	256.7	100%

Distance to Floor	Diameter in Feet	Footcandles
1.7'	1.1	200
3.3'	2.2	50
5.0'	3.3	22
6.7'	4.4	13
8.3'	5.5	8
10.0'	6.6	6



Photometry based on (1) 97305S MR16 LED Lamp in 3000°K CCT

Component Diagram:



7400 Linder Ave. | Skokie, Illinois 60077 | 800-347-5483
© 2013 Sea Gull Lighting LLC, a Generation Brands Company.

